

Certificate of Analysis

Company: Hidden Door Cannabis LLC

Sample ID: Tush Kush (GMOxPlatinum Kush)

Lot: 3

Report Date: 2/14/2024

Matrix: Flower

Date Analyzed: 2/12/2024

Customer ID: 230424-0

Date Sampled: N/A

Analyt: 048

Grower License #: SCLT0211

Date Received: 2/7/2024

Report ID: C240207AT

Terpenes Summary

Terpene	LOQ (mg/g)	Results (mg/g)	Weight (%)
α - Pinene	0.010	1.679	0.168
Camphene	0.010	0.276	0.028
β -Myrcene	0.010	2.208	0.221
b-Pinene	0.010	1.911	0.191
3-Carene	0.010	<LOQ	<LOQ
α -Terpinene	0.010	<LOQ	<LOQ
Limonene	0.010	6.473	0.647
ρ -Cymene	0.010	<LOQ	<LOQ
Ocimene	0.010	5.348	0.535
Eucalyptol	0.010	0.067	0.007
γ -Terpinene	0.010	0.035	0.004
Terpinolene	0.010	0.168	0.017
Linalool	0.010	3.605	0.361
Isopulegol	0.010	<LOQ	<LOQ
Geraniol	0.010	0.094	0.009
Caryophyllene	0.010	3.591	0.359
α -Humulene	0.010	1.655	0.166
Trans-Nerolidol	0.010	<LOQ	<LOQ
Cis-Nerolidol	0.010	<LOQ	<LOQ
Guaiol	0.010	0.387	0.039
Caryophyllene Oxide	0.010	0.045	0.005
α -Bisabolol	0.010	0.121	0.012
Total Terpenes		27.663	2.769

10.69%
Percent Moisture

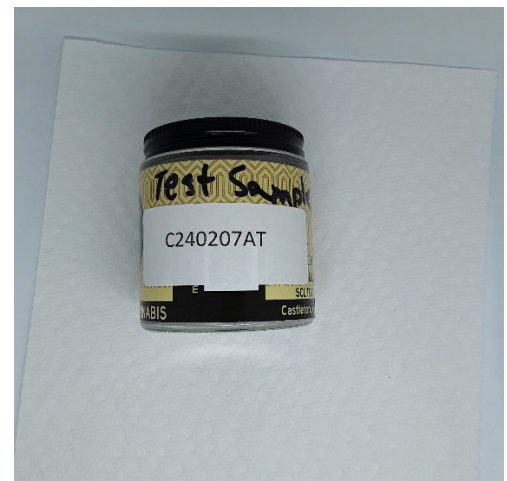
LOQ = The lowest quantity this method can reliably detect. Any terpene that was not detected is assumed to be less than the stated LOQ (<LOQ).

Terpene Methodology: Headspace Sampler, Gas Chromatography-Mass Spectrometry (GC-MS), using Perkin Elmer Clarus® SQ8 GC MS

Reagent Blanks: < LOQs for all analytes

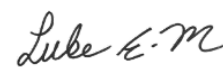
All results reflect dry weight of material, based on % moisture of the sample.

All moisture analysis is determined by loss-on-drying measurement using OHAUS Model MB90 Moisture Content Readers.



This report shall not be reproduced except in full without approval of the laboratory. This is to provide assurance that parts of a report are not taken out of context. Results apply to the samples as received.

Certified by:



Luke Emerson Mason (Laboratory Director, Bia Diagnostics)